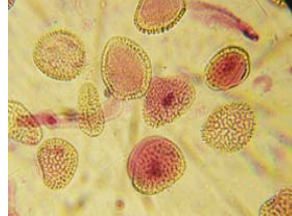


## SOT Annual Meeting 2010



### Poster Presentations

#### Monday, March 8<sup>th</sup> – Morning

##### Challenges in Applying Computational, Structure-Activity Relationship (SAR) Modeling for Predicting Toxicological Endpoints for Risk Assessment

Authors: **Angelina Duggan**, **Rhonda Kaetzel**, and **Laura McIntosh**

Session Title: Screening and Predicting Toxicity: Computational Approaches to Identify Targets

Abstract 190, Poster Board 406

Location: Exhibit Hall

Presentation Time: 9:30 AM

##### Inhibition of Gap Junction Intercellular Communication (GJIC) in Mouse Liver Cells by Technical Toxaphene and Toxaphene Congeners

Authors: **Jim Lamb**, Craig L. Walker, **Barbara H. Neal**, and James E. Klaunig

Session Title: Mechanistic Aspects of Persistent Organic Chemical Toxicity

Abstract 228, Poster Board 525

Location: Exhibit Hall

Presentation Time: 9:30 AM

#### Monday, March 8<sup>th</sup> – Afternoon

##### 2,4-Dichlorophenoxyacetic Acid (2,4-D): Evaluation of Systemic Toxicity in a Dietary Extended One-Generation Study in CrI:CD(SD) Rats

Authors: Jim S. Bus, **Barbara H. Neal**, Carol L. Zablony, Barry L. Yano, Shakil Saghir, and M. Sue Marty

Abstract 419, Poster Board 345

Session Title: Reproductive Toxicology

Location: Exhibit Hall

Presentation Time: 1:00 PM

**2,4-Dichlorophenoxyacetic Acid (2,4-D): Evaluation of Reproductive/Endocrine Endpoints in a Dietary Extended One-Generation Study in Crl:CD(SD) Rats**

Authors: **Barbara H. Neal**, Jim S. Bus, Carol L. Zablony, Barry L. Yano, Julie Passage, and M. Sue Marty  
Abstract 420, Poster Board 346  
Session Title: Reproductive Toxicology  
Location: Exhibit Hall  
Presentation Time: 1:00 PM

**2,4-Dichlorophenoxyacetic Acid (2,4-D): Evaluation of Developmental Neurotoxicity (DNT) and Developmental Immunotoxicity (DIT) in a Dietary Extended One-Generation Study in Crl:CD(SD) Rats**

Authors: Amanda K. Andrus, Michael Woolhiser, Darrell Boverhof, Jim S. Bus, **Barbara H. Neal**, and M. Sue Marty  
Abstract 421, Poster Board 347  
Session Title: Reproductive Toxicology  
Location: Exhibit Hall  
Presentation Time: 1:00 PM

**Assessment of Metals Concentrations Monitored in Caribou Collected Near a Mining Transport Road in Northwest Alaska**

Authors: **Michael Garry** and **Scott Shock**  
Abstract 438, Poster Board 440  
Session Title: Environmental Impact of Xenobiotics  
Location: Exhibit Hall  
Presentation Time: 1:00 PM

**Tuesday, March 9th – Morning**

**Influence of Phosphate on the Bioavailability of Arsenic from Soil in Cynomolgus Monkeys**

Authors: Stephen M. Roberts, John W. Munson, and **Yvette W. Lowney**  
Abstract 972, Poster Board -728  
Session Title: Arsenic I  
Location: Exhibit Hall  
Presentation Time: 9:00 AM

## Tuesday, March 9th – Afternoon

### Genetically Modified Soybeans: Critical Evaluation of Studies Addressing Potential Ultrastructural Changes Associated with Ingestion

Authors: **Amy Lavin Williams** and **John M. DeSesso**  
Abstract 1154, Poster Board 424  
Session Title: Safety Concerns of Food and Natural Products  
Location: Exhibit Hall  
Presentation Time: 1:00 PM

### Oral Gavage Subchronic Neurotoxicity and Inhalation Subchronic Immunotoxicity Studies of Ethylbenzene in the Rat

Authors: **Abby A. Li**, Jacques P. Maurissen, John F. Barnett, John A. Foss, Les Freshwater, Robert Garman, Vanessa Peachee, **Sandra Hong**, Donald Stump, and James S. Bus  
Abstract 1189, Poster Board -513  
Session Title: Safety Assessment: Commercial and Consumer Products  
Location: Exhibit Hall  
Presentation Time: 1:00 PM

### Analysis of C57Bl/6 Mice at 8 and 16 Months after Repeated Dosing of Paraquat and Maneb

Authors: **Laura J. McIntosh**, Stanley A. Benkovic, Diane B. Miller, James P. O'Callaghan, R. Patten, Martin J. Collier, Chris Willoughby, David Myers, Robert C. Switzer, and **Abby A. Li**  
Abstract 1261, Poster Board 641  
Session Title: Neurotoxicity of Pesticides  
Location: Exhibit Hall  
Presentation Time: 1:00 PM

## Wednesday, March 10th – Morning

### Monitoring Aspergillus Fumigatus Species in Tertiary Care Hospital Using Real-Time PCR and Culture-Based Assays

Author: **Marion Fedoruk**, **Rod Bronstein**; **Richard Richter**; and **Sandra Hong**  
Abstract 2316, Poster Board 647  
Session Title: Exposure Assessment/Biomonitoring/Epidemiology  
Location: Exhibit Hall  
Presentation Time: 9:00 AM

## Wednesday, March 10th – Afternoon

### Re-interpreting Historical Exposure Data Associated with the Use of Chrysotile-Containing Joint Compound

Authors: **Gregory P. Brorby**, **Patrick J. Sheehan**, D. Wayne Berman, and Stewart E. Holm  
Abstract 1873, Poster Board 428  
Session Title: Exposure Assessment and Emerging Biomonitoring Applications  
Location: Exhibit Hall  
Presentation Time: 1:00 PM

### Prevalence Rates of Pleural Abnormalities among Populations with Environmental Asbestos and Non-asbestos Exposures

Authors: Jaspreet Gujral, **Steve Su**, and **Valerie Craven**  
Abstract 1875, Poster Board-430  
Session Title: Exposure Assessment and Emerging Biomonitoring Applications  
Location: Exhibit Hall  
Presentation Time: 1:00 PM

### Development of Predictive Toxicity Measures for Assessing Risks from Catastrophic Chemical Releases

Authors: Ivan J. Boyer, Raymond S. Kutzman, **Amy Lavin Williams**, **John M. DeSesso**, James L. Buthod, Jessica Cox, Mark T. Whitmire, and Laurie E. Roszell  
Abstract 1917, Poster Board 527  
Session Title: Risk Assessment II: Methodological Challenges and Metals  
Location: Exhibit Hall  
Presentation Time: 1:00 PM

### Health Risk of Internal Nickel Exposure from Medical Devices

Authors: **Joyce Tsuji**, **Karyn Hentz**, **Shari Rosenbloom**, **Kenneth Bogen**, and **Lisa Yost**  
Abstract 1944, Poster Board 606  
Session Title: Risk Assessment II: Methodological Challenges and Metals  
Location: Exhibit Hall  
Presentation Time: 1:00 PM